

**ATTACHMENT B**

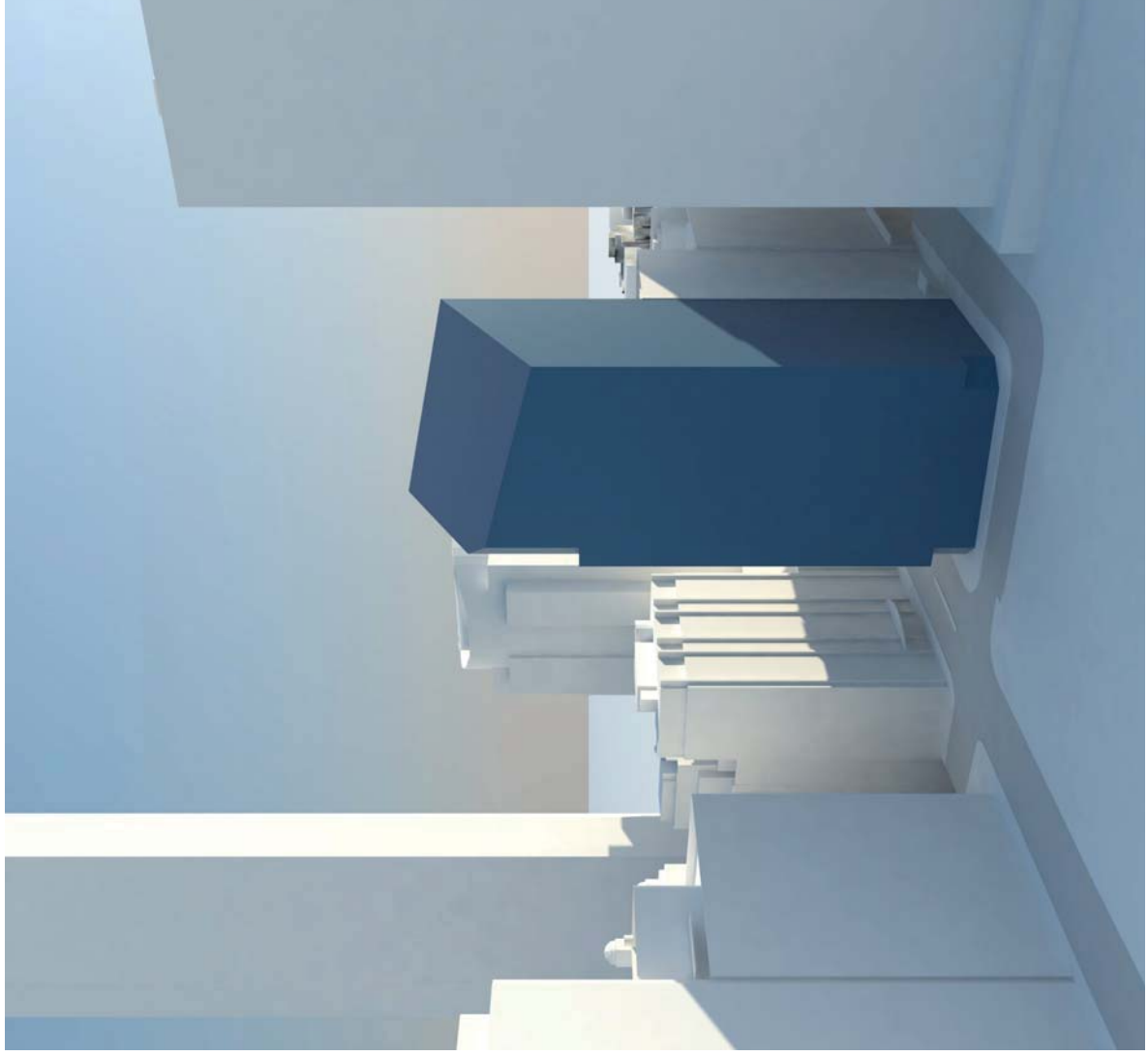
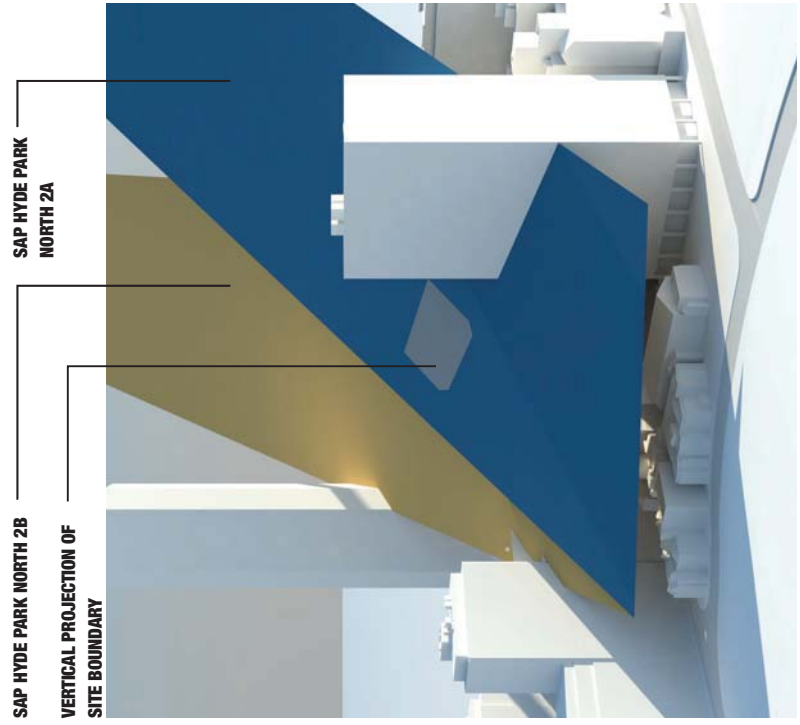
**SUN ACCESS PLANE DIAGRAM**

**148-160 KING STREET, SYDNEY**



## ENVELOPE ANALYSIS - HEIGHT

Under Sydney LEP 2012, the maximum height of the building envelope is controlled by the sun access planes that intersect the site. The two relevant sun access planes are Hyde Park North 2B and Hyde Park North 2A. In accordance with LEP clause 6.18, Sun Access Plane Hyde Park North 2A becomes the controlling height plane for the site.



**EXTRUSION OF SITE BOUNDARY EXTENDED TO SAP HYDE PARK NORTH 2A**

Note: the envelope projection has a chamfered profile to the south east and south west corners at street level, which are a consequence of the limited in stratum corner boundary conditions applicable to the site. A limited in stratum condition also applies to the upper south west corner of the site.